

Custom Size Paper

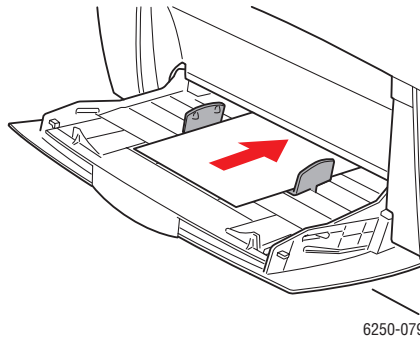
Print custom sizes of media in Tray 1 (MPT).

You can print on custom size paper within these dimensions:

- Width: 89–216 mm (3.5–8.5 in.)
- Length: 140–356 mm (5.5–14 in.)

Loading Custom Size Paper in Tray 1 (MPT)

1. Insert the custom size paper into Tray 1 (MPT). Adjust the guides to match the size of the paper. Place the side to be printed **facedown** with the **top** of the page toward the **back** of the printer.



- When prompted by the front panel to confirm the paper type and size:
2. Press the **OK** button to accept the current setting, or to change the paper size.
 - a. Select **Change**, then press the **OK** button.
 - b. Select the paper type, then press the **OK** button.
 - c. Select **Custom**, then press the **OK** button.
 - d. Select **Custom Width (W)**, then press the **OK** button.
 - e. Select the desired width (the width of the paper as it enters the printer), then press the **OK** button.
 - f. Select **Custom Height (H)**, then press the **OK** button.
 - g. Select the desired height, then press the **OK** button.